

# Smoke Spill Motors

## IE2 & IE3 Series

### Industrial Motors

Commercial &  
Appliance Motors

Automation

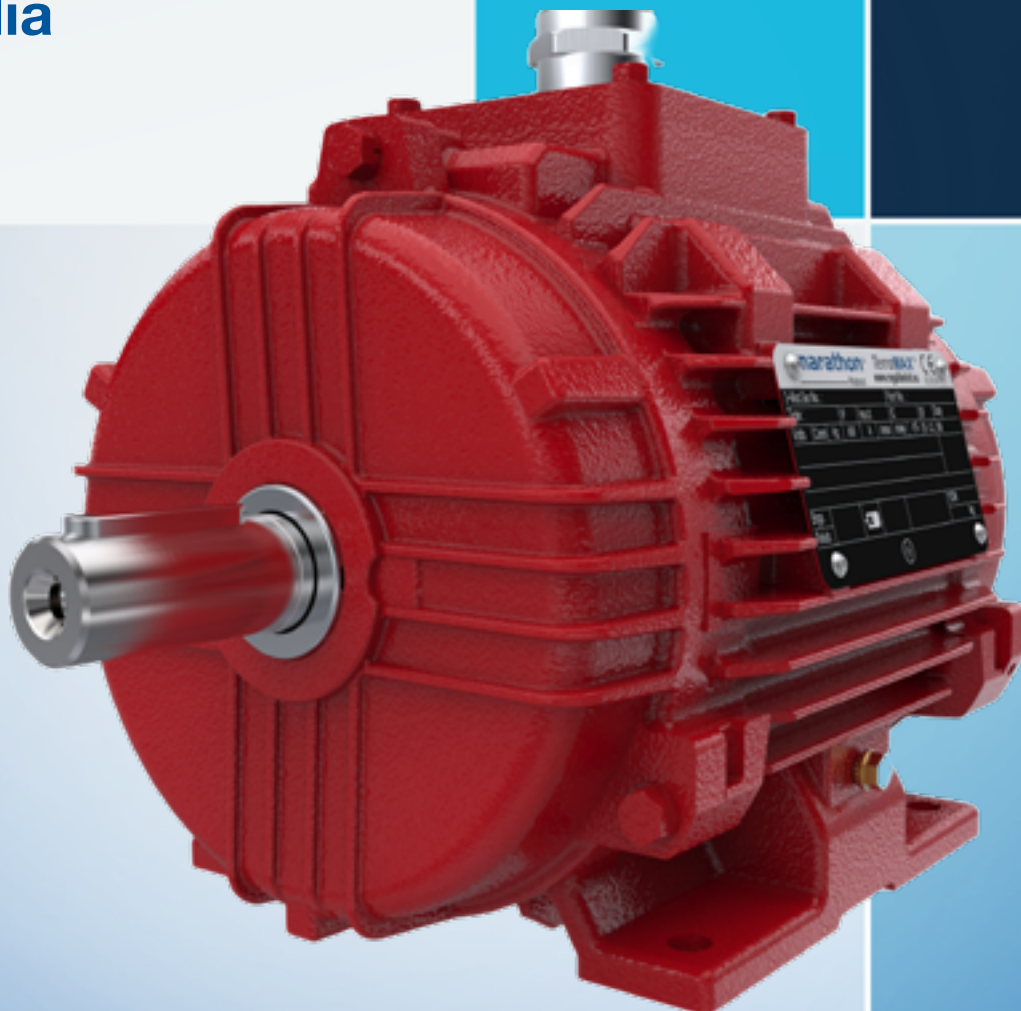
Digital &  
Systems

Energy

Transmission &  
Distribution

Coatings

May 2026  
India



## Introduction :

Marathon Electric presents SMOKE SPILL range of three phase squirrel cage induction motors with best in class quality to ensure reliability at service point. Smoke Spill motors are designed to withstand required operation at elevated temperature under emergency situation like an event of fire hazard, so that evacuation can be done with minimum loss of life. The design of this range of product is based on excellence in advanced technology linked with the company producing electric motors for more than 100 years. Stringent quality control, procedures are adopted at every step of manufacturing to ensure each motor meets requisite quality standard leading to customer satisfaction.

## Range :

**Frame Size** : 80M - 280M(for higher frame sizes, refer to works)

**Power Rating** : 0.37kW - 90kW (2 Pole to 6 Pole)

**Duty** : Continuously rated at 50°C temperature and normal supply condition before emergency.

**Class of Insulation** : H (Temperature rise limited to Class-B Before Emergency)

## Supply Voltage and Frequency :

**Voltage** : 200 - 690 V  $\pm$  10% Frequency :  
: 50/60 Hz  $\pm$  5%

Standard motors are wound for 3 phase, 415 V,50 Hz supply condition

**Type of Cooling** : 1C418 (Air-over motor)  
Motor cooling IC 410/411 as per requirement

**Mounting** : IMB3 / IMB5 or any other type as per requirement.

**Typical features** : Operation at 250°C for 2 hrs/300°C for 2 hrs/ 400°C for 2 hrs

**Specification** : BSEN:12101-3

**Standard Feature** : TB on Top for frames upto 225M  
TP on side for frames upto 250M and above. (Non-standard TB position available on requirement)

**Performance** : IE2/IE3 compatible with VFD Dual Speed (Efficiency as per Marathon standard) also available.

Class	Temperature °C	Minimum Functioning Period (minutes)
F250	250	120
F300	300	120
F400	400	120

## Application :

1. Public Building
2. Car Parking
3. Sites With Smoke control System
4. Jet fans
5. Axial fans
6. Axial roof ventilators
7. Tunnel ventilators
8. Centrifugal roof units

In an unlikely event of fire, fans fitted with these motors reduce the heat loading on the building and keep access/escape routes smoke - free.



# PERFORMANCE DATA - SCS (IE2) MOTORS @ 50 Hz

## Three-Phase Squirrel Cage Induction Motor:

- Voltage: 415 / 400 / 380 ±10% | 230 / 460 ±10%
- Ambient: 50°C (For Smoke Spill 250°C, 300°C, 400°C)
- Service Factor on AOM: 1.2
- Duty : S1
- Class of Insulation: H - (SMOKEEXHAUSTER)
- Enclosure : IP55, IC418

Frame	Rated (kW)	Speed (RPM)	50Hz Supply									
			Full Load Amps			Power Factor	Efficiency			Starting Current	Starting Torque	Breakdown Torque (kg-m)
			380V	400V	415V		100%	75%	50%			
<b>2 Pole Motors</b>												
80M	0.75	2825	1.8	1.7	1.6	0.86	77.4	77.4	75.8	6.3	2.7	2.8
80M	1.1	2825	2.5	2.4	2.3	0.88	79.6	79.6	78.8	6.3	2.6	2.8
90S	1.5	2869	3.3	3.1	3.0	0.88	81.3	81.3	80.2	6.6	3.0	3.1
90L	2.2	2868	4.6	4.3	4.2	0.89	83.2	83.2	83.0	7.2	3.5	3.2
100L	3.0	2879	6.1	5.8	5.5	0.90	84.6	84.6	84.4	7.5	3.3	3.2
100L	3.7	2874	7.2	6.9	6.6	0.91	85.5	85.5	85.0	7.0	3.4	3.2
112M	4.0	2864	7.6	7.2	7.0	0.93	85.8	85.8	85.5	6.7	2.7	2.9
132S	5.5	2894	10.2	9.7	9.4	0.94	87.0	87.0	86.5	7.7	2.5	3.1
132S	7.5	2899	13.8	13.1	12.6	0.94	88.1	88.1	87.5	7.8	2.5	3.1
160M	11.0	2935	20.3	19.5	19.0	0.91	89.4	89.4	88.2	7.5	2.4	2.9
160M	15	2928	27.1	26.0	25.1	0.92	90.3	90.3	89.1	7.5	2.6	3.0
160L	18.5	2934	33	32	31	0.92	90.9	90.9	89.8	7.5	2.9	3.1
180M	22	2945	39	38	36	0.92	91.3	91.3	91.8	7.2	2.4	3.2
200L	30.0	2956	54	53	52	0.89	92.0	92.0	91.5	6.3	1.9	3.0
200L	37	2955	67	65	63	0.90	92.5	92.5	92.2	6.5	2.0	3.1
225M	45.0	2968	82	78	75	0.90	92.9	92.9	93.2	6.5	1.9	3.0
250M	55	2975	101	96	92	0.89	93.2	93.2	92.8	6.7	1.9	3.2
280S	75.0	2978	135	128	124	0.90	93.8	93.8	93.1	7.2	2.0	3.4
280M	90	2979	161	153	148	0.90	94.1	94.1	93.6	7.6	2.3	3.5
<b>4 Pole Motors</b>												
80M	0.75	1406	1.9	1.8	1.7	0.77	79.6	79.6	77.2	5.8	3.1	3.3
90S	1.1	1440	2.5	2.6	2.6	0.76	81.4	81.4	78.7	6.1	2.6	2.5
90L	1.50	1438	3.3	3.3	3.4	0.79	82.8	82.8	80.1	6.1	2.8	2.5
100L	2.2	1444	5.0	4.9	4.7	0.78	84.3	84.3	82.3	6.4	2.7	3.0
100L	3.00	1450	6.3	6.0	5.8	0.84	85.5	85.5	85.3	6.4	2.8	3.0
112M	3.7	1449	7.6	7.3	7.0	0.85	86.3	86.3	86.0	6.0	2.3	2.6
112M	4.00	1450	8.4	7.9	7.7	0.84	86.6	86.6	86.5	7.3	2.7	3.0
132S	5.5	1456	11.3	11.0	11.2	0.83	87.7	87.7	87.0	7.1	2.7	3.0
132M	7.50	1454	15.0	14.4	14.3	0.85	88.7	88.7	88.5	6.5	2.1	2.8
132M	9.3	1450	18.6	17.7	18.1	0.85	89.3	89.3	88.5	6.5	2.1	2.8
160M	11.00	1467	21.6	21.1	20.3	0.84	89.8	89.8	88.4	6.8	2.3	2.7
160L	15.0	1469	29.2	28.5	28.0	0.84	90.6	90.6	89.3	6.5	2.4	2.6
180M	18.50	1469	35	34	33	0.87	91.2	91.2	91.0	6.2	2.2	2.7
180L	22.0	1471	42	41	40	0.86	91.6	91.6	91.5	6.8	2.5	3.0
200L	30.00	1476	57	56	55	0.84	92.3	92.3	92.0	6.2	2.2	2.8
225S	37.0	1477	69	66	65	0.87	92.7	92.7	92.0	6.2	2.0	2.7
225M	45.00	1477	84	80	78	0.87	93.1	93.1	92.8	6.2	2.1	2.7
250M	55.0	1480	102	98	95	0.87	93.5	93.5	93.0	6.8	2.3	2.8
280S	75.00	1484	138	131	128	0.88	94.0	94.0	93.5	5.8	1.8	2.6
280M	90.0	1485	165	157	153	0.88	94.2	94.2	93.7	6.8	2.2	3.0

## PERFORMANCE DATA - SCS (IE2) MOTORS @ 50 Hz

Frame	Rated (kW)	Speed (RPM)				Power Factor				Starting Current	Starting Torque	Breakdown Torque (kg-m)
			380V	400V	415V		100%	75%	50%			
<b>6 Pole Motors</b>												
90S	0.75	911	1.9	2.1	1.9	0.72	75.9	75.9	75.1	3.9	2.2	2.2
90L	1.1	924	2.9	2.9	3.0	0.70	78.1	78.1	77.5	4.1	2.4	2.4
100L	1.5	941	4.1	4.3	4.5	0.63	79.8	79.8	79.0	4.8	2.7	2.7
112M	2.2	961	5.2	5.2	5.2	0.75	81.8	81.8	80.2	6.0	2.3	2.6
132S	3.7	955	9.0	8.5	8.2	0.74	84.3	84.3	84.0	6.0	2.6	2.8
132M	5.5	956	12.5	12.5	12.1	0.74	86.0	86.0	85.3	6.7	3.1	3.2
160M	7.5	974	17.2	17.3	17.6	0.72	87.2	87.2	86.2	5.9	2.4	3.6
160M	9.3	974	21.1	21.2	22.0	0.72	88.1	88.1	87.0	6.0	2.3	3.4
160L	11	973	24.5	24.4	24.7	0.73	88.7	88.7	87.3	5.8	2.4	3.4
180L	15	974	31.0	31.4	31.4	0.74	89.7	89.7	89.4	5.3	2.0	2.3
200L	18.5	980	38	38	38	0.79	90.4	90.4	90.0	5.1	1.7	2.1
200L	22	980	45	45	45	0.78	90.9	90.9	90.2	5.3	1.8	2.2
225M	30	984	61	58	58	0.80	91.7	91.7	91.0	5.6	2.0	2.3
250M	37	986	72	69	68	0.84	92.2	92.2	91.8	6.7	2.3	2.9
280S	45	986	88	84	81	0.84	92.7	92.7	92.2	5.7	2.0	2.4
280M	55	986	106	101	98	0.84	93.1	93.1	92.6	5.7	2.0	2.3

### Note:

- For 60Hz frequency and for higher output designs please contact Marathon regional office.
- For Smoke spill motor Flying lead and TEAO construction can also be provided.
- Please connect with the marathon regional sales team for any additional information.

Changes may apply on standard offering for each region.

Please contact nearest Marathon regional office for particular requirement.

## PERFORMANCE DATA - SCS (IE2) MOTORS @ 60 Hz

Frame	Rated (kW)	60Hz Supply									
		Speed (RPM)	Full Load		Power Factor	Efficiency			Starting Current	Starting Torque	Breakdown Torque (kg-m)
			230V	460V		100%	75%	50%			
<b>2 Pole Motors</b>											
80M	0.75	3390	3.0	1.5	0.83	75.5	75.5	75.8	6.9	2.5	2.6
80M	1.1	3390	4.0	2.0	0.84	82.5	82.5	78.8	6.9	2.4	2.6
90S	1.50	3443	5.2	2.6	0.86	84.0	84.0	80.2	7.3	2.8	2.8
90L	2.2	3442	7.3	3.7	0.88	85.5	85.5	83.0	7.9	3.2	2.9
100L	3.00	3455	9.8	4.9	0.89	86.5	86.5	84.4	8.3	3.0	2.9
100L	3.7	3449	11.5	5.8	0.92	87.5	87.5	86.6	7.7	3.1	2.9
112M	4.00	3437	12.3	6.1	0.93	88.0	88.0	88.0	7.4	2.5	2.7
132S	5.5	3473	16.8	8.4	0.93	88.5	88.5	88.0	8.5	2.3	2.8
132S	7.50	3479	22.4	11.2	0.94	89.5	89.5	88.8	8.6	2.3	2.8
160M	11.0	3522	34	17	0.89	90.2	90.2	88.2	8.3	2.2	2.7
160M	15.00	3514	47	23	0.89	90.2	90.2	89.1	8.3	2.4	2.8
160L	18.5	3521	57	28	0.90	91.0	91.0	89.8	8.3	2.7	2.8
180M	22	3534	66	33	0.92	91.0	91.0	91.8	7.9	2.2	2.9
200L	30	3547	91	46	0.90	91.7	91.7	91.5	6.9	1.7	2.8
200L	37	3546	112	56	0.90	92.4	92.4	92.2	7.2	1.8	2.8
225M	45	3562	135	67	0.90	93.0	93.0	93.2	7.2	1.7	2.8
250M	55	3570	167	83	0.89	93.0	93.0	92.8	7.4	1.7	2.9
280S	75	3574	223	112	0.90	93.6	93.6	93.1	7.9	1.8	3.1
280M	90	3575	266	133	0.90	94.5	94.5	93.6	8.4	2.1	3.2
<b>4 Pole Motors</b>											
80M	0.75	1687	3.2	1.6	0.75	78.0	78.0	77.2	6.4	3.1	3.3
90S	1.1	1728	4.1	2.1	0.80	84.0	84.0	78.7	6.7	2.6	2.5
90L	1.5	1726	5.6	2.8	0.80	84.0	84.0	80.1	6.7	2.8	2.5
100L	2.2	1733	7.8	3.9	0.81	87.5	87.5	82.3	7.0	2.7	3.0
100L	3.0	1740	10.2	5.1	0.84	87.5	87.5	85.3	7.0	2.8	3.0
112M	3.7	1739	12.2	6.1	0.87	87.5	87.5	87.3	6.6	2.3	2.6
112M	4.0	1740	13.5	6.8	0.84	88.5	88.5	86.5	8.0	2.7	3.0
132S	5.5	1747	17.9	9.0	0.86	89.5	89.5	89.0	7.8	2.7	3.0
132M	7.5	1745	25.0	12.5	0.84	89.5	89.5	88.9	7.2	3.4	3.5
132M	9.3	1740	31	16	0.83	89.5	89.5	89.0	7.2	3.4	3.5
160M	11.0	1760	36	18	0.84	91.0	91.0	88.4	7.5	2.3	2.7
160L	15.0	1763	49	24	0.85	91.0	91.0	89.3	7.2	2.4	2.6
180M	18.5	1763	58	29	0.87	92.4	92.4	91.7	6.8	2.2	2.7
180L	22	1765	69	35	0.86	92.4	92.4	91.8	7.5	2.5	3.0
200L	30	1771	95	48	0.85	93.0	93.0	93.0	6.8	2.2	2.8
225S	37	1772	115	57	0.87	93.0	93.0	93.6	6.8	2.0	2.7
225M	45	1772	139	69	0.87	93.6	93.6	94.0	6.8	2.1	2.7
250M	55	1776	171	85	0.86	94.1	94.1	93.9	7.5	2.3	2.8
280S	75	1781	226	113	0.88	94.5	94.5	94.0	6.4	1.8	2.6
280M	90	1782	275	137	0.87	94.5	94.5	94.2	7.5	2.0	2.8

## PERFORMANCE DATA - SCS (IE2) MOTORS @ 60 Hz

Frame	Rated (kW)	60Hz Supply									
		Speed (RPM)	Full Load		Power Factor	Efficiency			Starting Current	Starting Torque	Breakdown Torque (kg-m)
			230V	460V		100%	75%	50%			
<b>6 Pole Motors</b>											
90S	0.75	1093	3.4	1.7	0.75	73.0	73.0	77.2	4.3	2.0	2.0
90L	1.1	1109	4	2	0.80	85.5	85.5	78.7	4.5	2.2	2.2
100L	1.5	1129	5.4	2.7	0.80	86.5	86.5	80.1	5.3	2.5	2.5
112M	2.2	1153	7.8	3.9	0.81	87.5	87.5	82.3	6.6	2.1	2.4
132S	3.7	1146	12.2	6.1	0.87	87.5	87.5	87.3	6.6	2.4	2.6
132M	5.5	1147	17.9	9	0.86	89.5	89.5	89.0	7.4	2.8	2.9
160M	7.5	1169	25	12.5	0.84	89.5	89.5	88.9	6.5	2.2	3.3
160M	9.3	1169	37	19	0.70	89.5	89.5	89.0	6.6	2.1	3.1
160L	11	1168	36	18	0.84	90.2	90.2	88.4	6.4	2.2	3.1
180L	15	1169	49	25	0.85	90.2	90.2	89.3	5.8	1.8	2.1
200L	18.50	1176	58	29	0.87	91.7	91.7	91.7	5.6	1.6	1.9
200L	22	1176	70	35	0.86	91.7	91.7	91.8	5.8	1.7	2.0
225M	30	1181	95	48	0.85	93.0	93.0	93.0	6.2	1.8	2.1
250M	37	1183	115	57	0.87	93.0	93.0	93.6	7.4	2.1	2.7
280S	45	1183	139	69	0.87	93.6	93.6	94.0	6.3	1.8	2.2
280M	55	1183	172	86	0.86	93.6	93.6	93.9	6.3	1.8	2.1

### Note:

- For 60Hz frequency and for higher output designs please contact Marathon regional office.
- For Smoke spill motor Flying lead and TEAO construction can also be provided.
- Please connect with the marathon regional sales team for any additional information.

Changes may apply on standard offering for each region.

Please contact nearest Marathon regional office for particular requirement.

# PERFORMANCE DATA FOR SERVICE FACTOR 1.2 @ AIR OVER CONDITION - SCS (IE2) MOTORS

Frame	Rated (kW)	AOM SF 1.2								
		AMPS					50Hz		60Hz	
		380V	400V	415V	230V	460V	Efficiency	Power Factor	Efficiency	Power Factor
<b>2 Pole Motors</b>										
80M	0.75	2.16	2.04	1.92	4	2	74.2	0.88	72.4	0.85
80M	1.1	3.0	2.9	2.8	5	2	76.9	0.88	79.7	0.84
90S	1.50	4.0	3.7	3.6	6	3	78.7	0.90	81.3	0.88
90L	2.2	5.5	5.2	5.0	9	4	80.9	0.92	83.1	0.91
100L	3.00	7.3	7.0	6.6	12	6	82.5	0.93	84.3	0.92
100L	3.7	8.6	8.3	7.9	14	7	83.6	0.95	85.6	0.96
112M	4.00	9.1	8.64	8.4	15	7	84.1	0.95	86.2	0.95
132S	5.5	12.2	11.6	11.3	20	10	85.5	0.95	87.0	0.94
132S	7.50	16.6	15.7	15.1	27	13	86.8	0.95	88.2	0.95
160M	11.0	24.4	23.4	22.8	41	21	88.2	0.94	89.0	0.92
160M	15.00	33	31	30	56	28	89.2	0.93	89.1	0.90
160L	18.5	40	38	37.0	68	34	89.8	0.94	89.9	0.92
180M	22.00	47	45.2	44	79	40	90.3	0.94	90.0	0.94
200L	30.0	65	64	62	109	55	91.2	0.92	90.9	0.93
200L	37.00	80	78	76	134	67	91.7	0.93	91.6	0.93
225M	45.0	98	94	90	162	81	92.1	0.93	92.2	0.93
250M	55.00	121	115	110	200	100	92.5	0.92	92.3	0.92
280S	75.0	162	154	149	268	134	93.1	0.93	92.9	0.93
280M	90.00	193	184	178	319	159	93.5	0.93	93.9	0.93
<b>4 Pole Motors</b>										
80M	0.75	2.3	2.2	2.0	3.9	1.9	76.7	0.82	75.1	0.80
90S	1.1	3.0	3.1	3.1	4.9	2.5	78.9	0.80	81.4	0.84
90L	1.50	4.0	4.0	4.1	6.7	3.4	80.5	0.83	81.6	0.84
100L	2.2	6.0	5.9	5.6	9.4	4.7	82.2	0.81	85.3	0.84
100L	3.00	7.6	7.2	7.0	12.3	6.1	83.5	0.88	85.5	0.88
112M	3.7	9.1	8.8	8.4	14.6	7.3	84.4	0.88	85.6	0.90
112M	4.00	10.1	9.5	9.2	16.2	8.1	85.1	0.88	86.9	0.88
132S	5.5	13.6	13.2	13.4	21.5	10.8	86.3	0.86	88.1	0.89
132M	7.50	18.0	17.3	17.2	30	15.0	87.4	0.88	88.2	0.87
132M	9.3	22.3	21.2	21.7	38	19	88.1	0.88	88.3	0.86
160M	11.00	25.9	25.3	24.4	43	22	88.8	0.86	90.0	0.86
160L	15.0	35.0	34	34	58	29	89.6	0.86	90.0	0.87
180M	18.50	42.0	40	39	69	35	90.3	0.90	91.5	0.90
180L	22.0	50	49	48.0	83	42	90.7	0.89	91.5	0.89
200L	30.00	69	67	66.1	114	57	91.5	0.87	92.2	0.88
225S	37.0	83	79	78	138	69	92.0	0.90	92.3	0.90
225M	45.00	101	96	94	166	83	92.4	0.90	92.9	0.90
250M	55.0	122	118	114	205	102	92.9	0.89	93.5	0.88
280S	75.00	166	157	154	272	136	93.4	0.90	93.9	0.90
280M	90.0	198	188.4	183.6	330	165	93.6	0.90	93.9	0.89

## PERFORMANCE DATA FOR SERVICE FACTOR 1.2 @ AIR OVER CONDITION - SCS (IE2) MOTORS

Frame	Rated (kW)	AOM SF 1.2								
		AMPS					50Hz		60Hz	
		380V	400V	415V	230V	460V	Efficiency	Power Factor	Efficiency	Power Factor
<b>6 Pole Motors</b>										
90S	0.75	2.3	2.5	2.3	4.1	2.1	74.3	0.75	71.5	0.78
90L	1.1	3.5	3.5	3.6	4.8	2.4	76.5	0.72	83.8	0.83
100L	1.5	4.9	5.2	5.4	6.5	3.3	78.4	0.66	85.0	0.83
112M	2.2	6.2	6.2	6.2	9.4	4.7	80.4	0.78	86.1	0.84
132S	3.7	10.8	10.2	9.8	14.6	7.3	83.0	0.77	86.2	0.91
132M	5.5	15.0	15.0	14.5	21.5	10.8	84.9	0.76	88.3	0.88
160M	7.5	20.6	20.8	21.1	30	15	86.3	0.74	88.6	0.86
160M	9.3	25.3	25.4	26.4	45	22	87.2	0.74	88.6	0.72
160L	11	29.4	29.3	29.6	44	22	87.9	0.75	89.4	0.86
180L	15	37	38	38	59	29	89.0	0.76	89.5	0.87
200L	18.5	46	45	45	70	35	89.8	0.81	91.1	0.89
200L	22	54	54	54	84	42	90.3	0.80	91.1	0.88
225M	30	73	70	69	114	57	91.2	0.83	92.5	0.88
250M	37	86	83	81	138	69	91.7	0.87	92.5	0.90
280S	45	106	101	97	166	83	92.2	0.87	93.1	0.90
280M	55	127	121	118	206	103	92.7	0.86	93.2	0.88

### Note:

- For 60Hz frequency and for higher output designs please contact Marathon regional office.
- For Smoke spill motor Flying lead and TEAO construction can also be provided.
- Please connect with the marathon regional sales team for any additional information.

Changes may apply on standard offering for each region.

Please contact nearest Marathon regional office for particular requirement.

# PERFORMANCE DATA - TCS (IE3) MOTORS @ 50 Hz

## Three-Phase Squirrel Cage Induction Motor:

- Voltage: 415 / 400 / 380 ±10% | 230 / 460 ±10%
- Ambient: 50°C (For Smoke Spill 250°C, 300°C, 400°C)
- Service Factor on AOM: 1.2
- Duty : S1
- Class of Insulation: H - (SMOKEEXHAUSTER)
- Enclosure : IP55, IC418

Frame	Rated (kW)	Speed (RPM)	50Hz Supply									
			Full Load Amps			Power Factor	Efficiency			Starting Current	Starting Torque	Breakdown Torque (kg-m)
			380V	400V	415V		100%	75%	50%			
<b>2 Pole Motors</b>												
80M	0.75	2880	1.7	1.6	1.6	0.83	80.7	80.7	75.6	6.5	3.0	3.3
80M	1.1	2878	2.3	2.3	2.2	0.85	82.7	82.7	79.3	6.8	3.2	3.3
90S	1.50	2879	3.0	2.9	2.8	0.89	84.2	84.2	81.8	7.5	3.5	3.5
90L	2.2	2880	4.3	4.2	4.0	0.89	85.9	85.9	84.7	8.1	3.8	3.6
100L	3	2889	5.8	5.5	5.3	0.90	87.1	87.1	86.6	7.9	3.2	3.6
100L	3.7	2880	6.9	6.5	6.4	0.93	87.8	87.8	88.4	7.7	3.3	3.5
112M	4	2921	7.7	7.3	7.0	0.90	88.1	88.1	88.1	8.6	2.7	3.7
132S	5.5	2934	10.3	9.9	9.6	0.90	89.2	89.2	87.7	7.7	2.4	3.6
132S	7.5	2931	13.7	13.2	13.7	0.91	90.1	90.1	89.3	7.8	2.6	3.6
160M	9.3	2955	17.3	16.6	16.2	0.89	90.7	90.7	90.0	7.9	2.6	3.5
160M	11	2953	20.4	19.6	19.1	0.89	91.2	91.2	89.7	7.9	2.3	3.7
160M	15	2956	27.0	25.9	25.2	0.91	91.9	91.9	90.9	8.4	2.6	3.9
160L	18.5	2948	37	32	30	0.92	92.4	92.4	91.9	8.1	2.6	3.6
180M	22	2961	41	39	38	0.87	92.7	92.7	91.3	7.4	2.2	3.6
200L	30	2973	57	55	53	0.85	93.3	93.3	91.6	7.4	2.1	3.7
200L	37	2974	70	66	64	0.86	93.7	93.7	92.5	7.8	2.4	3.8
225M	45	2978	84	79	77	0.87	94.0	94.0	92.7	8.0	2.2	3.9
250M	55	2977	100	95	91	0.89	94.3	94.3	93.0	7.0	1.9	3.4
280S	75	2983	137	130	125	0.88	94.7	94.7	93.2	7.9	2.1	3.8
280M	90	2982	162	154	148	0.89	95.0	95.0	93.9	7.6	2.1	3.6
<b>4 Pole Motors</b>												
80M	0.75	1443	1.7	1.7	1.6	0.75	82.5	82.5	77.6	6.6	3.0	3.0
90S	1.1	1445	2.4	2.4	2.4	0.79	84.1	84.1	79.1	6.8	2.9	3.4
90L	1.5	1445	3.2	3.1	3.1	0.83	85.3	85.3	80.3	7.0	3.0	3.4
100L	2.2	1456	4.5	4.4	4.4	0.83	86.7	86.7	85.1	7.0	2.3	2.9
100L	3	1458	6.2	5.9	5.7	0.84	87.7	87.7	86.2	7.7	2.6	3.1
112M	3.7	1460	7.6	7.4	7.3	0.82	88.4	88.4	87.7	7.5	1.8	2.8
112M	4	1457	8.3	7.9	7.6	0.83	88.6	88.6	88.1	8.4	3.2	3.6
132S	5.5	1469	11.0	10.7	10.5	0.83	89.6	89.6	89.7	6.7	2.3	2.7
132M	7.5	1469	15.0	14.2	13.7	0.84	90.4	90.4	90.4	7.5	2.8	3.0
160M	11	1475	21.0	20.4	19.9	0.85	91.4	91.4	90.6	7.3	2.5	3.3
160L	15	1474	28.5	27.5	27.0	0.86	92.1	92.1	91.6	7.6	2.7	3.4
180M	19	1478	36.0	35.0	34.7	0.83	92.6	92.6	92.2	7.3	2.5	3.3
180L	22	1478	44	42	40	0.82	93.0	93.0	92.5	7.5	2.7	3.5
200L	30	1479	57	54	52	0.85	93.6	93.6	93.6	6.6	2.2	2.9
225S	37	1484	70	67	64	0.85	93.9	93.9	94.0	7.3	2.4	3.1
225M	45	1483	85	81	78	0.85	94.2	94.2	94.2	7.2	2.4	3.0
250M	55	1487	103	98	94	0.86	94.6	94.6	94.0	7.2	2.2	3.4
280S	75	1489	138	131	126	0.87	95.0	95.0	94.0	6.4	2.3	2.7
280M	90	1489	165	157	151	0.87	95.2	95.2	94.5	6.4	2.4	2.7

## PERFORMANCE DATA - TCS (IE3) MOTORS @ 50 Hz

Frame	Rated (kW)	Speed (RPM)				Power Factor				Starting Current	Starting Torque	Breakdown Torque (kg-m)
			380V	400V	415V		100%	75%	50%			
<b>6 Pole Motors</b>												
90S	0.75	946	2.3	2.1	2.1	0.64	78.9	78.9	71.1	4.8	3.0	3.1
90L	1.1	941	3.1	3.0	2.9	0.66	81.0	81.0	74.8	4.8	3.0	3.0
100L	1.5	966	3.7	3.5	3.4	0.74	82.5	82.5	77.8	5.9	2.2	2.7
112M	2.2	958	5.4	5.2	5.0	0.73	84.3	84.3	82.4	5.9	2.5	2.8
132S	3	973	7.5	7.1	6.9	0.71	85.6	85.6	84.3	5.5	2.0	2.6
132S	3.7	973	8.5	8.1	7.8	0.76	86.5	86.5	86.7	5.6	2.0	2.5
132M	4	973	9.5	9.0	8.7	0.74	86.8	86.8	85.9	5.6	2.1	2.6
132M	5.5	973	12.5	11.9	11.4	0.76	88.0	88.0	88.0	5.9	2.2	2.6
160M	7.5	976	16.0	15.2	14.6	0.80	89.1	89.1	88.7	5.3	1.8	2.4
160L	11	977	23	22.3	21.5	0.79	90.3	90.3	89.6	5.6	2.0	2.6
180L	15	982	32	30	29	0.78	91.2	91.2	90.7	6.1	2.1	2.7
200L	18.5	984	38	36	35	0.80	91.7	91.7	91.6	5.8	2.0	2.4
200L	22	984	45	43	41	0.80	92.2	92.2	92.1	6.0	2.1	2.5
225M	30	987	59	56	54	0.83	92.9	92.9	91.9	6.8	2.2	2.9
250M	37	987	73	70	67	0.82	93.3	93.3	92.8	6.8	2.4	2.9
280S	45	989	90	86	82	0.81	93.7	93.7	92.9	6.1	1.9	2.6
280M	55	989	107	102	98	0.83	94.1	94.1	93.7	6.2	1.9	2.5

### Note:

- For 60Hz frequency and for higher output designs please contact Marathon regional office.
- For Smoke spill motor Flying lead and TEAO construction can also be provided.
- Please connect with the marathon regional sales team for any additional information.

Changes may apply on standard offering for each region.

Please contact nearest Marathon regional office for particular requirement.

## PERFORMANCE DATA - TCS (IE3) MOTORS @ 60 Hz

Frame	Rated (kW)	60Hz Supply									
		Speed (RPM)	Full Load		Power Factor	Efficiency			Starting Current	Starting Torque	Breakdown Torque (kg-m)
			230V	460V		100%	75%	50%			
<b>2 Pole Motors</b>											
80M	0.75	3456	3.1	1.5	0.80	77.0	77.0	71.9	7.2	2.8	3.0
80M	1.1	3454	4.1	2.0	0.81	84.0	84.0	80.6	7.5	2.9	3.0
90S	1.50	3455	5.3	2.7	0.83	85.5	85.5	83.1	8.3	3.2	3.2
90L	2.2	3456	7.2	3.6	0.89	86.5	86.5	85.3	8.9	3.5	3.3
100L	3.00	3467	9.7	4.8	0.89	87.5	87.5	87.0	8.7	2.9	3.3
100L	3.7	3456	11.8	5.9	0.89	88.5	88.5	89.1	8.5	3.0	3.2
112M	4.00	3505	12.4	6.2	0.91	89.0	89.0	89.0	9.5	2.5	3.4
132S	5.5	3521	17.5	8.8	0.88	89.5	89.5	88.0	8.5	2.2	3.3
132S	7.50	3517	23.7	11.9	0.88	90.2	90.2	89.4	8.6	2.4	3.3
160M	9.3	3546	28.2	14.1	0.90	92.0	92.0	91.3	8.7	2.4	3.2
160M	11.00	3544	34	17	0.90	91.0	91.0	89.5	8.7	2.1	3.4
160M	15.0	3547	45	23	0.91	91.0	91.0	90.0	9.2	2.4	3.6
160L	18.50	3538	56	28	0.90	91.7	91.7	91.2	8.9	2.4	3.3
180M	22.0	3553	68	34	0.88	91.7	91.7	90.3	8.1	2.0	3.3
200L	30.00	3568	93	46	0.88	92.4	92.4	90.7	8.1	1.9	3.4
200L	37.0	3569	112	56	0.89	93.0	93.0	91.8	8.6	2.2	3.5
225M	45.00	3574	137	69	0.88	93.6	93.6	92.3	8.8	2.0	3.6
250M	55.0	3572	166	83	0.89	93.6	93.6	92.3	7.7	1.7	3.1
280S	75.00	3580	222	111	0.90	94.1	94.1	92.6	8.7	1.9	3.5
280M	90.0	3578	264	132	0.90	95.0	95.0	93.9	8.4	1.9	3.3
<b>4 Pole Motors</b>											
80M	0.75	1732	3.0	1.5	0.75	83.5	83.5	78.6	7.3	2.8	2.8
90S	1.1	1734	4.2	2.1	0.76	86.5	86.5	81.5	7.5	2.7	3.1
90L	1.50	1734	5.6	2.8	0.78	86.5	86.5	81.5	7.7	2.8	3.1
100L	2.2	1747	7.7	3.9	0.80	89.5	89.5	87.9	7.7	2.1	2.7
100L	3.00	1750	10.4	5.2	0.81	89.5	89.5	88.0	8.5	2.4	2.8
112M	3.7	1752	13.0	6.5	0.80	89.5	89.5	88.8	8.3	1.7	2.6
112M	4.00	1748	13.9	6.9	0.80	90.5	90.5	90.0	9.2	2.9	3.3
132S	5.5	1763	19.6	9.8	0.77	91.7	91.7	91.8	7.4	2.1	2.5
132M	7.50	1763	25.3	12.7	0.81	91.7	91.7	91.7	8.3	2.6	2.8
160M	11.0	1770	37	19	0.80	92.4	92.4	91.6	8.0	2.3	3.0
160L	15.00	1769	50	25	0.81	93.0	93.0	92.5	8.4	2.5	3.1
180M	18.5	1774	61	31	0.81	93.6	93.6	93.2	8.0	2.3	3.0
180L	22.00	1774	71	36	0.83	93.6	93.6	93.1	8.3	2.5	3.2
200L	30.0	1775	95	48	0.84	94.1	94.1	94.1	7.3	2.0	2.7
225S	37.00	1781	117	59	0.84	94.5	94.5	94.6	8.0	2.2	2.8
225M	45.0	1780	142	71	0.84	95.0	95.0	95.0	7.9	2.2	2.8
250M	55.00	1784	172	86	0.84	95.4	95.4	94.8	7.9	2.0	3.1
280S	75.0	1787	229	115	0.86	95.4	95.4	94.4	7.0	2.1	2.5
280M	90.00	1787	275	138	0.86	95.4	95.4	94.7	7.0	2.2	2.5

## PERFORMANCE DATA - TCS (IE3) MOTORS @ 60 Hz

Frame	Rated (kW)	60Hz Supply									
		Speed (RPM)	Full Load		Power Factor	Efficiency			Starting Current	Starting Torque	Breakdown Torque (kg-m)
			230V	460V		100%	75%	50%			
<b>6 Pole Motors</b>											
90S	0.75	1135	3.4	1.7	0.68	82.5	82.5	74.7	5.3	2.8	2.8
90L	1.1	1129	4.4	2.2	0.72	87.5	87.5	81.3	5.3	2.8	2.8
100L	1.5	1159	5.9	3.0	0.72	88.5	88.5	83.8	6.5	2.0	2.5
112M	2.2	1150	8.8	4.4	0.70	89.5	89.5	87.6	6.5	2.3	2.6
132S	3	1168	11.5	5.8	0.73	89.5	89.5	88.2	6.1	1.8	2.4
132S	3.7	1168	15.0	7.5	0.69	89.5	89.5	89.7	6.2	1.8	2.3
132M	4	1168	16.3	8.2	0.68	90.5	90.5	89.6	6.2	1.9	2.4
132M	5.5	1168	20.8	10.4	0.73	91.0	91.0	91.0	6.5	2.0	2.4
160M	7.5	1171	27	13	0.78	91.0	91.0	90.6	5.8	1.7	2.2
160L	11	1172	38	19	0.79	91.7	91.7	91.0	6.2	1.8	2.4
180L	15	1178	53	27	0.77	91.7	91.7	91.2	6.7	1.9	2.5
200L	18.5	1181	64	32	0.78	93.0	93.0	92.9	6.4	1.8	2.2
200L	22	1181	76	38	0.78	93.0	93.0	92.9	6.6	1.9	2.3
225M	30	1184	100	50	0.80	94.1	94.1	93.1	7.5	2.0	2.7
250M	37	1184	123	62	0.80	94.1	94.1	93.6	7.5	2.2	2.7
280S	45	1187	1	1	82.00	94.5	94.5	93.7	6.7	1.7	2.4
280M	55	1187	174	87	0.84	94.5	94.5	94.1	6.8	1.7	2.3

### Note:

- For 60Hz frequency and for higher output designs please contact Marathon regional office.
- For Smoke spill motor Flying lead and TEAO construction can also be provided.
- Please connect with the marathon regional sales team for any additional information.

Changes may apply on standard offering for each region.

Please contact nearest Marathon regional office for particular requirement.

# PERFORMANCE DATA FOR SERVICE FACTOR 1.2 @ AIR OVER CONDITION - TCS (IE3) MOTORS

Frame	Rated (kW)	AOM SF 1.2								
		AMPS					50Hz		60Hz	
		380V	400V	415V	230V	460V	Efficiency	Power Factor	Efficiency	Power Factor
<b>2 Pole Motors</b>										
80M	0.75	2.0	1.9	1.9	4	2	79.5	0.86	75.8	0.83
80M	1.1	2.8	2.8	2.6	5	2	81.6	0.87	82.9	0.83
90S	1.5	3.6	3.5	3.4	6	3	83.1	0.91	84.4	0.85
90L	2.2	5.2	5.0	4.8	9	4	84.9	0.92	85.5	0.92
100L	3	7.0	6.6	6.4	12	6	86.3	0.93	86.7	0.92
100L	3.7	8.3	7.8	7.7	14	7	87.0	0.96	87.7	0.92
112M	4	9.2	8.8	8.4	15	7	87.3	0.93	88.2	0.94
132S	5.5	12.4	11.9	11.5	21	11	88.5	0.93	88.8	0.91
132S	7.5	16.4	15.8	16.4	28	14	89.4	0.94	89.5	0.91
160M	9.3	20.8	19.9	19.4	34	17	90.1	0.92	91.4	0.93
160M	11	24.5	23.5	22.9	40	20	90.6	0.92	90.4	0.93
160M	15	32	31	30	55	27	91.4	0.94	90.5	0.94
160L	18.5	44	38	36	68	34	91.9	0.95	91.2	0.93
180M	22	49	47	46	82	41	92.2	0.90	91.2	0.91
200L	30	68	66	64	111	56	92.8	0.88	91.9	0.91
200L	37	84	79	77	135	67	93.3	0.89	92.6	0.92
225M	45	101	95	92	165	82	93.6	0.89	93.2	0.90
250M	55	120	114	109	199	99	94.0	0.91	93.3	0.91
280S	75	164	156	150	267	133	94.4	0.90	93.8	0.92
280M	90	194	185	178	317	159	94.7	0.91	94.7	0.92
<b>4 Pole Motors</b>										
80M	0.75	2.0	2.0	1.9	4	2	80.5	0.78	81.4	0.78
90S	1.1	2.9	2.9	2.9	5	3	82.3	0.82	84.6	0.79
90L	1.5	3.8	3.7	3.7	7	3	83.7	0.86	84.9	0.81
100L	2.2	5.4	5.3	5.3	9	5	85.2	0.86	87.9	0.83
100L	3	7.4	7.1	6.8	12	6	86.3	0.86	88.1	0.83
112M	3.7	9.1	8.9	8.8	16	8	87.2	0.84	88.3	0.82
112M	4	10.0	9.5	9.1	17	8	87.5	0.86	89.4	0.83
132S	5.5	13.2	12.8	12.6	23	12	88.6	0.86	90.7	0.80
132M	7.5	18.0	17.0	16.4	30	15	89.5	0.87	90.8	0.84
160M	11	25.2	24.5	23.9	45	22	90.6	0.87	91.6	0.82
160L	15	34.2	33.0	32.4	60	30	91.4	0.89	92.3	0.84
180M	18.5	43	42	42	74	37	91.9	0.85	92.9	0.83
180L	22	53	50	48	85	43	92.4	0.84	93.0	0.85
200L	30	68	65	62	114	57	93.0	0.87	93.5	0.86
225S	37	84	80	77	140	70	93.3	0.87	93.9	0.86
225M	45	102	97	94	170	85	93.7	0.87	94.5	0.86
250M	55	124	118	113	207	103	94.1	0.88	94.9	0.86
280S	75	166	157	151	275	138	94.5	0.89	94.9	0.88
280M	90	198	188	181	330	165	94.7	0.89	94.9	0.88

## PERFORMANCE DATA FOR SERVICE FACTOR 1.2 @ AIR OVER CONDITION - TCS (IE3) MOTORS

Frame	Rated (kW)	AOM SF 1.2								
		AMPS					50Hz		60Hz	
		380V	400V	415V	230V	460V	Efficiency	Power Factor	Efficiency	Power Factor
<b>6 Pole Motors</b>										
90S	0.75	2.8	2.5	2.5	4.0	2.0	77.6	0.67	81.1	0.71
90L	1.1	3.7	3.6	3.5	5.3	2.6	79.8	0.69	86.2	0.75
100L	1.5	4.4	4.2	4.1	7.1	3.5	81.3	0.77	87.2	0.75
112M	2.2	6.5	6.2	6.0	10.6	5.3	83.2	0.75	88.3	0.72
132S	3	9.0	8.5	8.3	13.8	6.9	84.7	0.73	88.6	0.75
132S	3.7	10.2	9.7	9.4	18	9	85.7	0.78	88.7	0.71
132M	4	11.4	10.8	10.4	20	10	86.1	0.76	89.8	0.70
132M	5.5	15.0	14.3	13.7	25	12	87.4	0.79	90.4	0.76
160M	7.5	19.2	18.2	17.5	32	16	88.5	0.82	90.4	0.80
160L	11	28	27	26	46	23	89.8	0.81	91.2	0.81
180L	15	38	36	35	64	32	90.7	0.81	91.2	0.80
200L	18.5	46	43	42	77	38	91.3	0.83	92.6	0.81
200L	22	54	52	49	91	46	91.7	0.82	92.5	0.80
225M	30	71	67	65	120	60	92.5	0.85	93.7	0.82
250M	37	88	84	80	148	74	93.0	0.84	93.8	0.82

### Note:

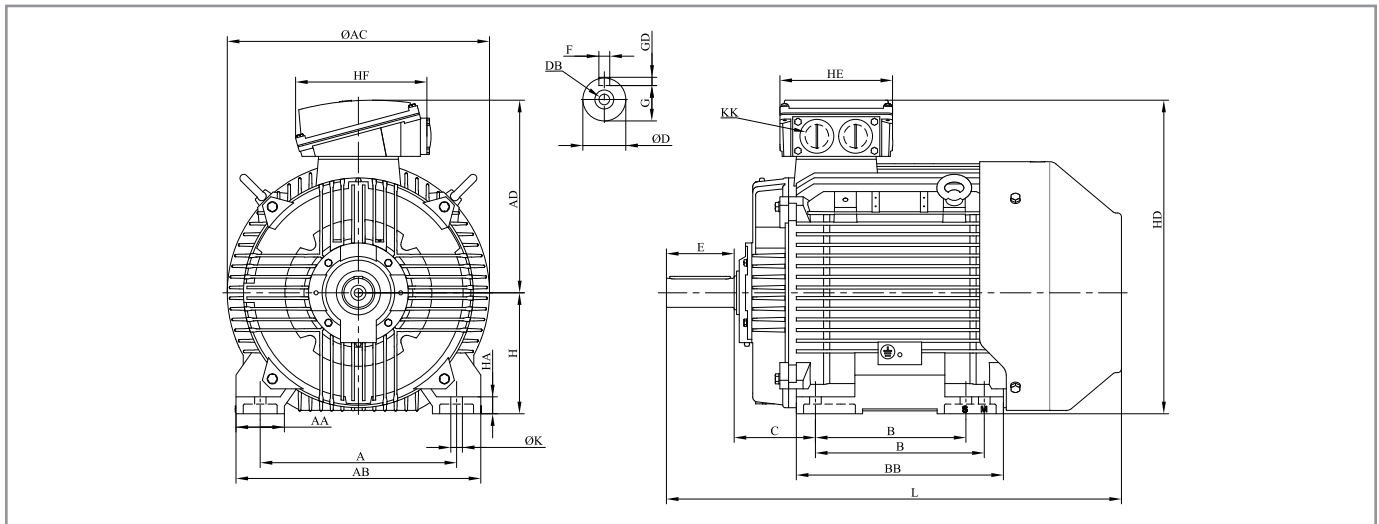
- For 60Hz frequency and for higher output designs please contact Marathon regional office.
- For Smoke spill motor Flying lead and TEAO construction can also be provided.
- Please connect with the marathon regional sales team for any additional information.

Changes may apply on standard offering for each region.

Please contact nearest Marathon regional office for particular requirement.

# DIMENSIONAL DRAWINGS - SCS MOTORS

## IEC®\* MOTORS, FOOT MOUNTED (B3 TOP TERMINAL BOX)



Frame	Pole	A	AA	AB	AC	AD	B	BB	C	D	DB	E	F	GD	G	H	HA	HD	HE	HF	K	KK	L
80M	2-6P	125	30	152	182	162	100	125	50	19	M6	40	6	6	15.5	80	9	241	118	126	10	M20	281
90S	2-6P	140	35	165	199	170	100	125	56	24	M8	50	8	7	20	90	9	260	118	126	10	M20	307
90L	2-6P	140	35	165	199	170	100/125	150	56	24	M8	50	8	7	20	90	9	260	118	126	10	M20	332
100L	2-6P	160	32	192	229	183	140	170	63	28	M10	60	8	7	24	100	13	282	118	126	12	M20	398
112M	2-6P	190	38	222	256	208	140	170	70	28	M10	60	8	7	24	112	12	320	160	168	12	M25	399
132S	2-6P	216	40	255	295	231	140	172	89	38	M12	80	10	8	33	132	13	363	160	168	12	M25	465
132M	2-6P	216	40	255	295	231	140/178	210	89	38	M12	80	10	8	33	132	13	363	160	168	12	M25	503
160M	2-6P	254	65	315	352	280	210	244	108	42	M16	110	12	8	37	160	22	440	200	216	14.5	M32	622
160L	2-6P	254	65	315	352	280	210/254	288	108	42	M16	110	12	8	37	160	22	440	200	216	14.5	M32	666
180M	2-6P	279	75	354	399	292	241	322	121	48	M16	110	14	9	42.5	180	28	472	200	216	14.5	M32	712
180L	2-6P	279	75	354	399	292	241/279	360	121	48	M16	110	14	9	42.5	180	28	472	200	216	14.5	M32	750
200L	2-6P	318	80	398	446	330	305	361	133	55	M20	110	16	10	49	200	26	530	224	248	18.5	M40	769
225S	4-6P	356	90	446	491	359	286	380	149	60	M20	140	18	11	53	225	28	584	224	248	18.5	M40	837
225M	2P	356	90	446	491	359	286/311	405	149	55	M20	110	16	10	49	225	28	584	224	248	18.5	M40	832
225M	4-6P	356	90	446	491	359	286/311	405	149	60	M20	140	18	11	53	225	28	584	224	248	18.5	M40	862

### Note :

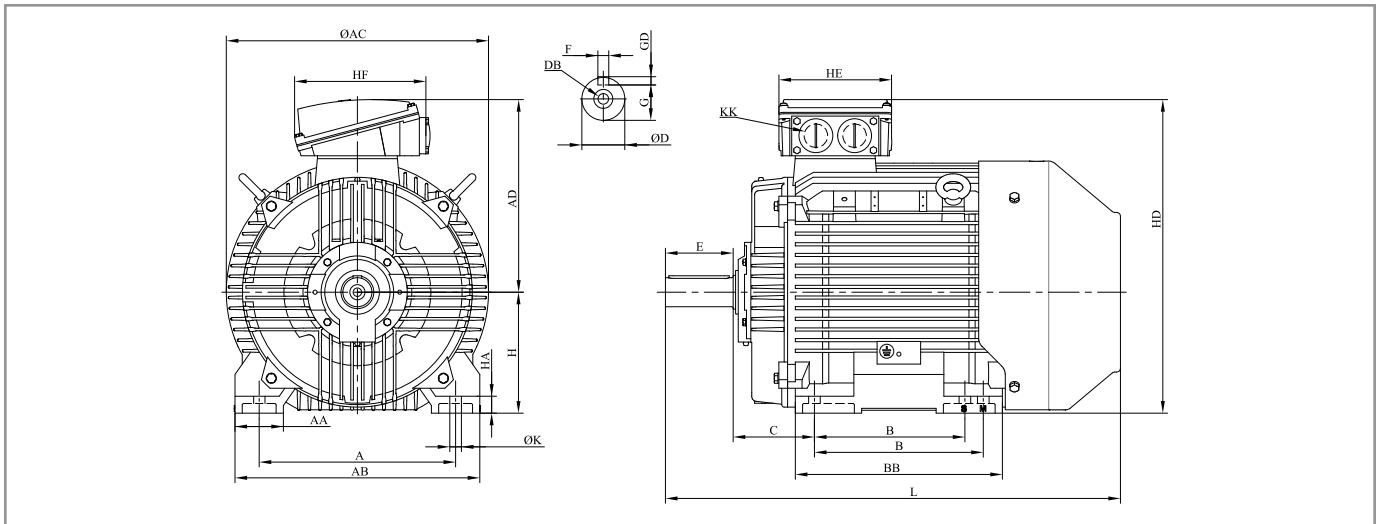
All dimensions in mm.

Changes may apply on standard offering for each region. Please contact nearest Marathon regional office for particular requirement.

\*IEC is a trademark of International Electrotechnical Commission and is not owned or under the control of Marathon Electric Motors.

# DIMENSIONAL DRAWINGS - TCS MOTORS

## IEC®\* MOTORS, FOOT MOUNTED (B3 TOP TERMINAL BOX)



Frame	Pole	A	AA	AB	AC	AD	B	BB	C	D	DB	E	F	GD	G	H	HA	HD	HE	HF	K	KK	L
80M	All	125	30	152	182	162	100	125	50	19	M6	40	6	6	15.5	80	9	241	122	157	10	M20	281
90S	All	140	35	165	199	170	100	125	56	24	M8	50	8	7	20	90	9	259	122	157	10	M20	307
90L	All	140	35	165	199	170	100/125	150	56	24	M8	50	8	7	20	90	9	259	122	157	10	M20	332
100L	All	160	32	192	229	183	140	170	63	28	M10	60	8	7	24	100	13	283	122	157	12	M20	398
112M	All	190	38	222	256	194	140	170	70	28	M10	60	8	7	24	112	12	306	122	157	12	M25	399
132S	All	216	40	255	295	227	140	172	89	38	M12	80	10	8	33	132	13	359	146	195	12	M25	465
132M	All	216	40	255	295	227	140/178	210	89	38	M12	80	10	8	33	132	13	359	146	195	12	M25	503
160M	All	254	65	315	352	260	210	244	108	42	M16	110	12	8	37	160	22	420	177	196	14.5	M32	622
160L	All	254	65	315	352	260	210/254	288	108	42	M16	110	12	8	37	160	22	420	177	196	14.5	M32	666
180M	All	279	75	354	399	282	241	322	121	48	M16	110	14	9	42.5	180	28	462	177	196	14.5	M32	712
180L	All	279	75	354	399	282	241/279	360	121	48	M16	110	14	9	42.5	180	28	462	177	196	14.5	M32	750
200L	All	318	80	398	446	330	305	361	133	55	M20	110	16	10	49	200	26	530	203	241	18.5	M40	769
225S	4-6P	356	90	446	491	355	286	380	149	60	M20	140	18	11	53	225	28	580	203	241	18.5	M40	837
225M	2P	356	90	446	491	355	286/311	405	149	55	M20	110	16	10	49	225	28	580	203	241	18.5	M40	832
225M	4-6P	356	90	446	491	355	286/311	405	149	60	M20	140	18	11	53	225	28	580	203	241	18.5	M40	862

### Note :

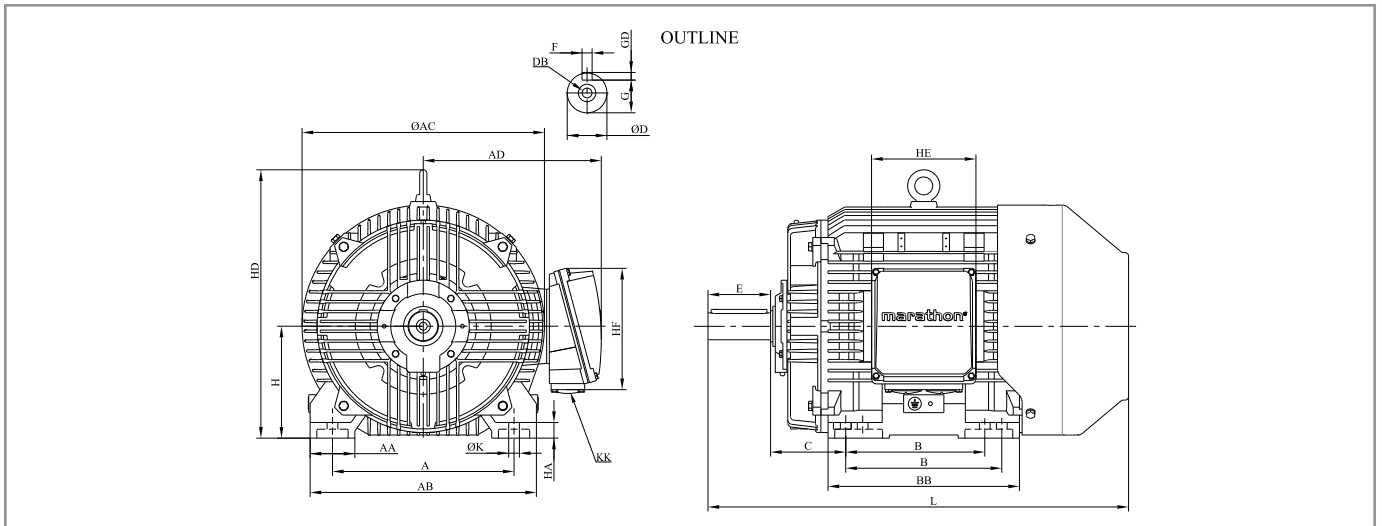
All dimensions in mm.

Changes may apply on standard offering for each region. Please contact nearest Marathon regional office for particular requirement.

\*IEC is a trademark of International Electrotechnical Commission and is not owned or under the control of Marathon Electric Motors.

# DIMENSIONAL DRAWINGS - TCS (IE3) MOTORS

## IEC®\* MOTORS, FOOT MOUNTED (B3 SIDE TERMINAL BOX)



Frame	Pole	A	AA	AB	AC	AD	B	BB	C	D	DB	E	F	GD	G	H	HA	HD	HE	HF	K	KK	L
250M	2P	406	100	506	542	398	311/349	428	168	60	M20	140	18	11	53	250	35	600	233	271	24	M50	941
250M	4-6P	406	100	506	542	398	311/349	428	65	M20	140	18	11	58	250	35	600	233	271	24	M50	941	
280S	2P	457	100	557	595	422	368	519	190	65	M20	140	18	11	58	280	38	680	233	271	24	M50	1060
280S	4-6P	457	100	557	595	422	368	519	190	75	M20	140	20	12	67.5	280	38	680	233	271	24	M50	1060
280M	2P	457	100	557	595	452	368/419	570	190	65	M20	140	18	11	58	280	38	680	233	271	24	M50	1111
280M	4-6P	457	100	557	595	452	368/419	570	190	75	M20	140	20	12	67.5	280	38	680	233	271	24	M50	1111

The scope of WEG Group solutions is not limited to products and solutions presented in this catalogue.

**To see our portfolio, contact us.**

**For WEG's worldwide operations visit our website**



**[www.weg.net](http://www.weg.net)**

**marathon**<sup>™</sup>  
WEG Group



**Kolkata Plant**

1, Taratala Road, Kolkata,  
West Bengal, 700024  
Phone:  
033-44030501/033-44030502

**Ahmadabad Plant**

B1/A, Gallops Industrial Park, Rajoda,  
Ahmedabad Gujarat, 382220  
Email: [Contact.Marathon@weg.net](mailto:Contact.Marathon@weg.net)  
website: [www.marathonelectric.in](http://www.marathonelectric.in)

Cod: 50144490 | Date (m/y): 05/2026.

The values shown are subject to change without prior notice.  
The information contained is reference values.