

MARATHON™ INDIA INDUSTRIAL SYSTEMS PRODUCT RANGE

December 2025
India

Industrial Motors

Commercial &
Appliance Motors

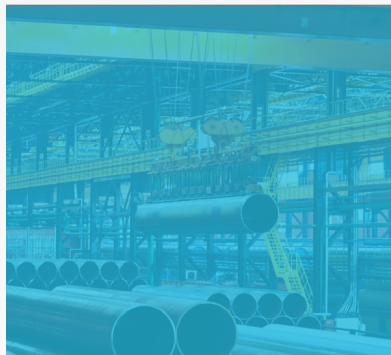
Automation

Digital &
Systems

Energy

Transmission &
Distribution

Coatings



Marathon™ Low Voltage Motors



Terramax SCA

IE2 MOTORS

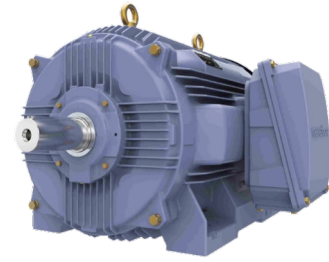
- Frame Sizes: IEC 80 - IEC 355
- Power Rating: 0.37 kW to 375 kW
- *Power Supply: AC 3 Phase 415V, 50Hz
- Pole: 2 to 8
- Protection: IP55 (IS 4691) / IP65 (Optional)
- Insulation: Class F with temperature rise limited to class B
- Common footprint dimension



Terramax TCA

IE3 MOTORS

- Frame Sizes: IEC 80 - IEC 355
- Power Rating: 0.37 kW to 375 kW
- *Power Supply: AC 3 Phase 415 V, 50 Hz
- Pole: 2 to 8
- Protection: IP55 (IS 4691) / IP65 (Optional)
- Insulation: Class F with temperature rise limited to class B
- Common footprint dimension



Terramax QCA

IE4 MOTORS

- Frame Sizes: IEC 200 - IEC 355
- Power Rating: 0.37 kW to 375 kW
- *Power Supply: AC 3 Phase 415 V, 50 Hz
- Pole: 2 to 8
- Protection: IP55 (IS 4691) / IP65 (Optional)
- Insulation: Class F with temperature rise limited to class B
- Common footprint dimension



Flame Proof Motors

**IE2 / IE3

- Frame Sizes: IEC 80 - IEC 355 for Gas Group IIA/IIB
- Frame Sizes: IEC 80 - IEC 160 for Gas Group IIC
- Frame Sizes: IEC 132 - IEC 315 for Gas Group I
- Power Rating: 0.37 kW to 315 kW
- * Power Supply: AC 3 Phase 415 V, 50 Hz
- Pole: 2 to 8
- Protection: IP55 (IS 4691) / IP65 (Optional)
- Insulation: Class F with temperature rise limited to class B
- Gas Group: I, IIA & IIB for entire range and IIC for frame 80 to 160
- Temperature Class: Upto T6



Smoke Spill Motors

IE2 / IE3

- Frame Sizes: IEC 80 - IEC 280
- Power Rating: 0.37 kW to 90 kW
- *Power Supply: AC 3 Phase 415 V, 50 Hz
- Pole: 2 to 8
- Protection: IP55 (IS 4691) & Above
- Insulation: Class H
- Thermal capacity under abnormal condition: 400 / 300 / 250 degree centigrade for 2 hours (Self-certified)



Firefighting Motors

**IE2

- Frame Sizes: IEC 112 - IEC 280
- Power Rating: 5.5 kW to 150 kW
- *Power Supply: AC 3 Phase 415 V, 50 Hz
- Pole: 2 & 4
- Protection: IP55 (higher degree protection class on request)
- Insulation: Class F, Temperature rise limited to class F

**For IE3 motors please contact Factory

* Note: For alternate power-supply of upto 720 V & frequency of 60 Hz refer to Engineering.



KS Crane Duty

SLIPRING MOTORS

- Frame Sizes: IEC 112 - IEC 560
- Power Rating: 2 kW to 860 kW (Periodic Duty Rating)
- * Power Supply: AC 3 Phase 415 V, 50 Hz
- Pole: 6 to 10
- Protection: IP55 (IS 4691)
- Insulation: Class F with temperature rise limited to class B



RW SPDP

SLIPRING MOTORS

- Frame Sizes: RW 89 to RW 168
- Power Rating: 90 kW to 1300 kW
- * Power Supply: AC 3 Phase 415 V, 50 Hz
- Pole: 4 to 10
- Protection: IP21, IP23 (IS 4691)
- Insulation: Class F with temperature rise limited to class B



CW SPDP

SLIPRING MOTORS

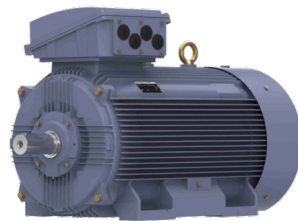
- Frame Sizes: IEC 450 to IEC710
- Power Rating: 500 kW to 2000 kW
- * Power Supply: AC 3 Phase 415 V, 50 Hz
- Pole: 6 to 10
- Protection: IP23 (IS 4691)
- Insulation: Class F with temperature rise limited to class B



Terramax SCV (IE2)

CRANE DUTY MOTOR

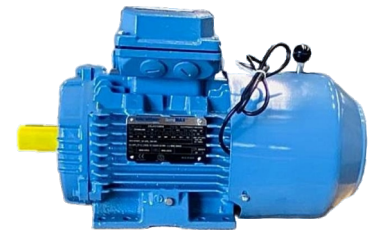
- Frame Sizes: IEC 80 - IEC 355
- Power Rating: 0.75 kW to 315 kW
- *Power Supply: AC 3 Phase 415 V, 50 Hz
- Pole: 4 to 8
- Protection: IP55 (IS 4691)
- Insulation: Class F
- Meets efficiency requirement as per IS 12615 2018 at eqv. S1 Output
- Suitable for DOL & VFD



Terramax TCV (IE3)

CRANE DUTY MOTOR

- Frame Sizes: IEC 80 - IEC 355
- Power Rating: 0.75 kW to 375 kW
- *Power Supply: AC 3 Phase 415 V, 50 Hz
- Pole: 4 to 8
- Protection: IP55 (IS 4691)
- Insulation: Class F
- Meets efficiency requirement as per IS 12615 2018 at eqv. S1 Output
- Suitable for DOL & VFD



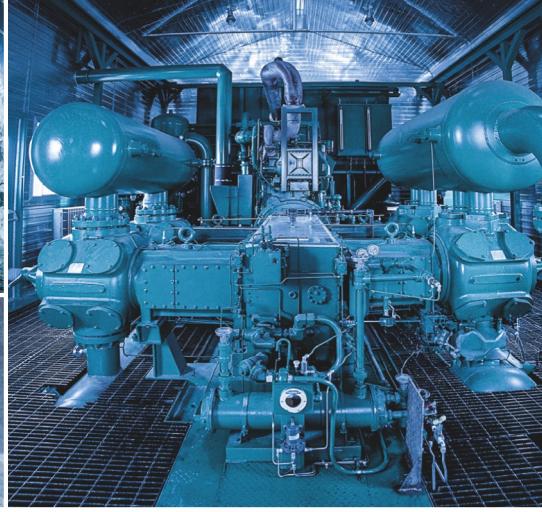
Terramax SCV (IE2) & TCV (IE3)

CRANE DUTY BRAKE MOTOR

- Frame Sizes: 80 - 160 Frame
- Power Rating: 0.37 kW - 15 kW
- Brake/ Rectifier : 415V AC In / 190V DC Out
- Up to Brake Size: 18 (Torque= 150 NM)
- *Power Supply: AC 3 Phase 415 V, 50 Hz
- Pole: 4 to 8
- Protection: IP55 (IS 4691)
- Insulation: Class F
- Meets efficiency requirement as per IS 12615 2018 at eqv. S1 Output
- Suitable for DOL & VFD

* Note: For alternate power-supply of upto 720 V & frequency of 60 Hz refer to Engineering.



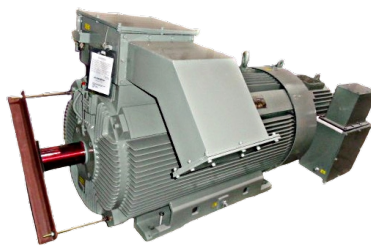


Marathon™ Medium Voltage Motors



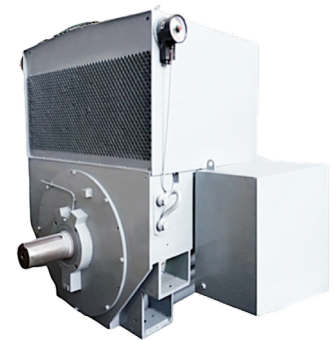
FLOWPAK Motors TEFC SQUIRREL CAGE

- Frame: IEC 280 to IEC 560
- Power Rating: up to 1.5 MW
- *Voltage: 415 V to 11KV
- Frequency: 50 Hz +- 5%
- Pole: 2 to 10
- Cooling Method: IC411/ IC416



FLOWPAK Motors TEFC SLIP RING

- Frame: IEC 355 to IEC 560
- Power Rating: 200 to 850 kW
- *Voltage: 415 V to 6.6 KV
- Frequency: 50 Hz +- 5%
- Pole: 4 to 10
- Cooling Method: IC411



UNIPAK Motors CACA SQUIRREL CAGE

- Frame: IEC 315 to IEC 710
- Power Rating: up to 5 MW
- *Voltage: 415 V to 11 KV
- Frequency: 50 Hz +- 5%
- Pole: 2 to 16
- Cooling Method: IC611/ IC616/ IC666



UNIPAK Motors CACA SLIP RING

- Frame: IEC 315 to IEC 710
- Power Rating: upto 3 MW
- *Voltage: 415 V to 11 KV
- Frequency: 50 Hz +- 5%
- Pole: 4 to 12
- Cooling Method: IC611/ IC616



UNIPAK Motors CACW SQUIRREL CAGE & SLIP RING

- Frame: IEC 315 to IEC 710
- Power Rating: up to 5 MW (for Squirrel Cage)
3 MW (for Slipring)
- *Voltage: 415 V to 11 KV
- Frequency: 50 Hz +- 5%
- Pole: 2 to 14
- Cooling Method: IC8A1W7/ IC8A6W7



UNIPAK Motors SPDP SQUIRREL CAGE

- Frame: IEC 315 to IEC 710
- Power Rating: up to 5 MW
- *Voltage: 415 V / 11 KV
- Frequency: 50 Hz +- 5%
- Pole: 2 to 14
- Cooling Method: IC01

* Note: For alternate power-supply of 690 V & frequency of 60 Hz refer to Engineering.



TEEPAK Motors

TETV SQUIRREL CAGE

- Frame: IEC 400 to IEC 1000
- *Power Rating: up to 4 MW
- Voltage: 415 V to 11 KV
- Frequency: 50 Hz +- 5%
- Pole: 2 to 14
- Cooling Method: IC511/IC516



FLOWPAK Motors

FLAME PROOF (Ex D) SQUIRREL CAGE

- Frame: IEC 280 to IEC 450
- *Power Rating: up to 750 kW
- Voltage: 3.3 KV / 6.6 KV
- Frequency: 50 Hz +- 5%
- Pole: 2 to 8
- Gas Group: I, IIA & IIB
- Cooling Method: IC411



Marathon™ Fans



Propeller Fan-Standard Efficiency (IE2)

- Air Flow: 1,200 m³/hr to 28,000 m³/hr
- Sweep Dia: 12" to 36"
- Voltage: 415 V +- 10%
- Frequency: 50 Hz +- 5%
- Static pressure: Free Flow



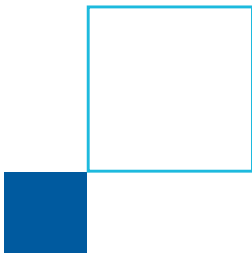
Propeller Fan-Premium Efficiency (IE3)

- Air Flow: 4,500 m³/hr to 28,200 m³/hr
- Sweep Dia: 18" to 36"
- Voltage: 415 V +- 10%
- Frequency: 50 Hz +- 5%
- Static pressure: Free Flow



Propeller Fan Super Premium Efficiency (IE4)

- Air Flow: 4,650 m³/hr to 28,500 m³/hr
- Sweep Dia: 18" to 36"
- Voltage: 415 V +- 10%
- Frequency: 50 Hz +- 5%
- Static pressure: Free Flow



Axial Flow Fan

- Air Flow: 1,000 m³/hr to 1,50,000 m³/hr
- Sweep Dia: 12" to 60"
- Voltage: 415 V +- 10%
- Frequency: 50 Hz +- 5%
- Static pressure: Free Flow to 135 mmWG



Centrifugal Fan

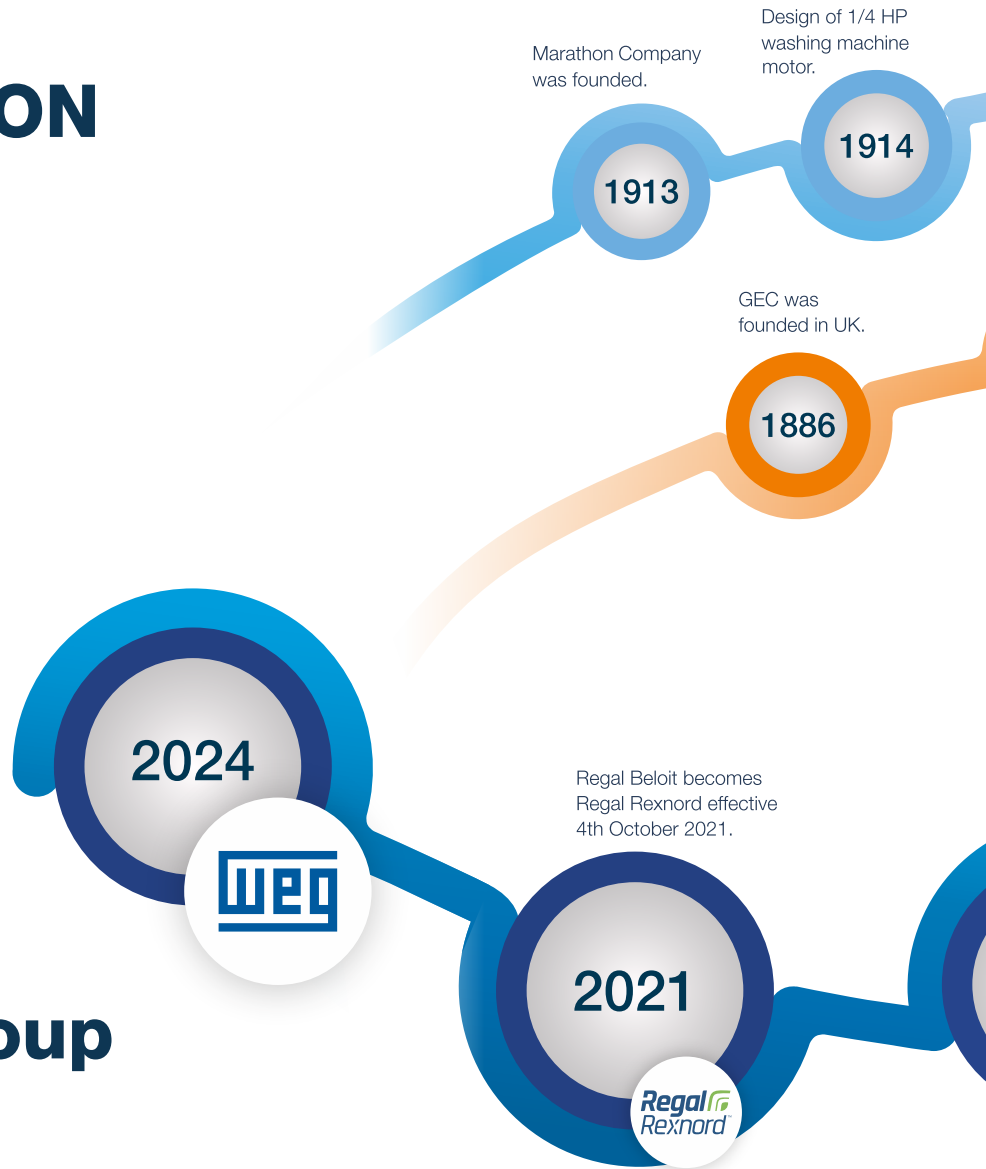
- Air flow: 1,000 m³/hr to 250,000 m³/hr
- Impeller dia: 250 mm to 2,000 mm
- Voltage: 415 V +- 10%
- Frequency: 50 Hz +- 5%
- Static pressure: 7.5 mm wg to 1000 mmWG

*

Note: For alternate power-supply of 690 V & frequency of 60 Hz refer to Engineering.

THE MARATHON BRAND GENESIS

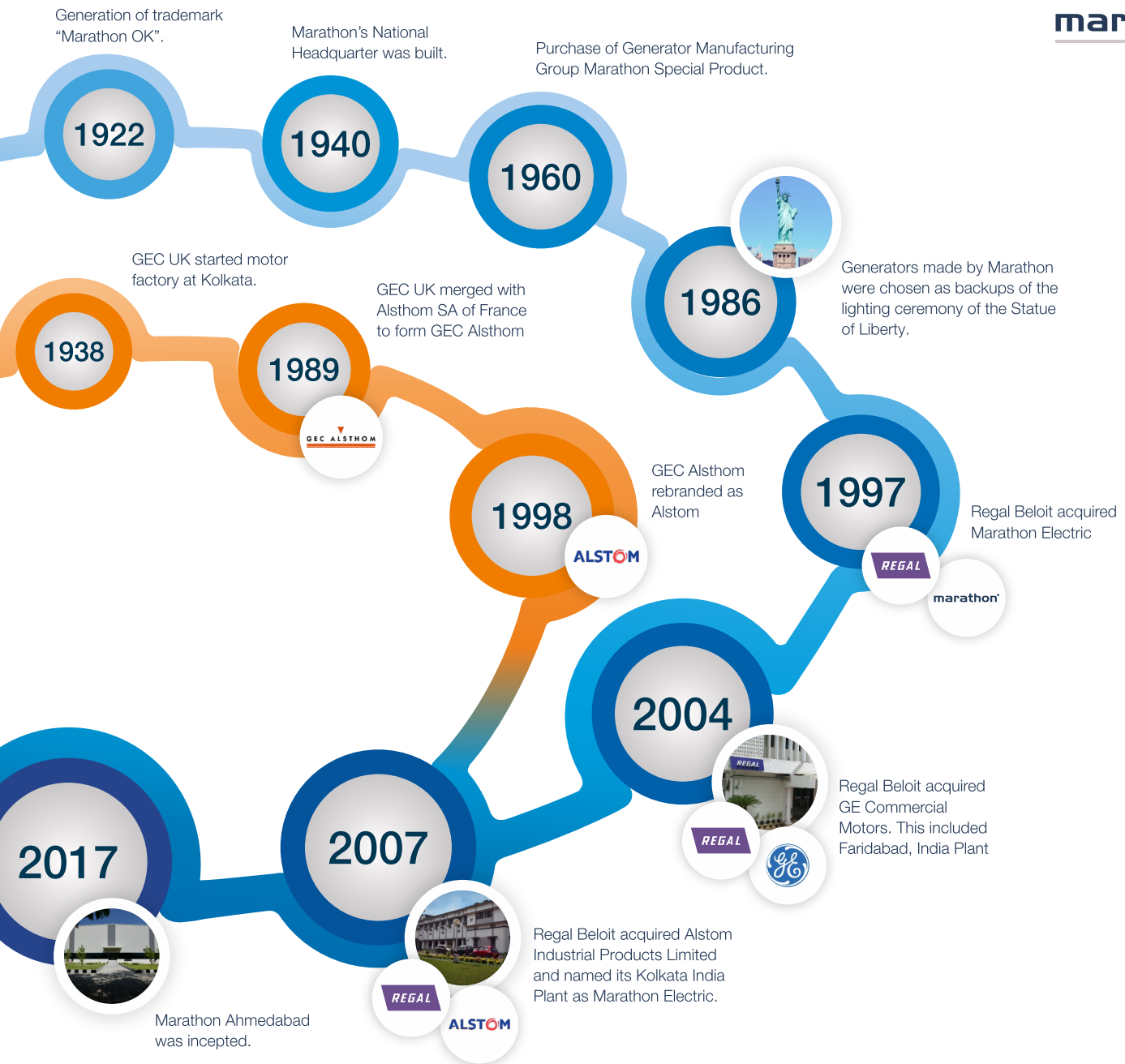
Since 2024 Marathon is part of the WEG Group. Founded in 1961, WEG is a global electro-electronic equipment company, operating in the capital goods sector with a focus on electric motors, gearboxes and drives and controls, energy generation and transformers, electrification products and systems, automation and digitalization. WEG stands out in innovation by constantly developing solutions to meet the major trends in energy efficiency, renewable energy and electric mobility.



WEG Group AROUND THE WORLD



66 MANUFACTURING SITES in 18 countries




+49,000
Employees worldwide
(2024)


Distributors/Agents in
+120
countries


Sales to over
135
countries



**COMMERCIAL OPERATIONS
in 42 countries**

- Algeria
- Argentina
- Australia
- Austria
- Belgium
- Brazil
- Canada
- Chile
- China
- Colombia
- Denmark
- Ecuador
- Egypt
- Finland
- France
- Germany
- Ghana
- India
- Indonesia
- Italy
- Japan
- Kazakhstan
- Malaysia
- Mexico
- Netherlands
- New Zealand
- Norway
- Peru
- Poland
- Portugal
- Russia
- Saudi Arabia
- Singapore
- South Africa
- Spain
- Sweden
- Switzerland
- Thailand
- Türkiye
- United Arab Emirates
- UK
- USA

Note: distributors/agents in 120 countries.

The scope of WEG Group solutions is not limited to products and solutions presented in this catalogue.

To see our portfolio, contact us.

For WEG's worldwide operations visit our website



www.weg.net

marathon[®]
WEG Group



Kolkata Plant

1, Taratala Road, Kolkata,
West Bengal, 700024

Phone:
033-44030501/033-44030502

Ahmedabad Plant

B1/A, Gallops Industrial Park, Rajoda,
Ahmedabad, Gujarat, 382220

Email: Contact.Marathon@weg.net
Website: www.marathonelectric.in